



CD247 Monoclonal Antibody(4B10)

Catalog No	YP-Ab-17319
Isotype	IgG
Reactivity	Human
Applications	WB;IHC;IF;FCM;ELISA
Gene Name	CD247
Protein Name	T-cell surface glycoprotein CD3 zeta chain
Immunogen	Purified recombinant fragment of human CD247 expressed in E. Coli.
Specificity	CD247 Monoclonal Antibody detects endogenous levels of CD247 protein.
Formulation	Ascitic fluid containing 0.03% sodium azide,0.5% BSA, 50%glycerol.
Source	Monoclonal, Mouse
Purification	Affinity purification
Dilution	Western Blot: 1/500 - 1/2000. Immunohistochemistry: 1/200 - 1/1000. Immunofluorescence: 1/200 - 1/1000. Flow cytometry: 1/200 - 1/400. ELISA: 1/10000. Not yet tested in other applications.
Concentration	1 mg/ml
Purity	≥90%
Storage Stability	-20°C/1 year
Synonyms	CD247; CD3Z; T3Z; TCRZ; T-cell surface glycoprotein CD3 zeta chain; T-cell receptor T3 zeta chain; CD antigen CD247
Observed Band	
Cell Pathway	Cell membrane ; Single-pass type I membrane protein.
Tissue Specificity	CD3Z is expressed in normal lymphoid tissue and in peripheral blood mononuclear cells (PBMCs) (PubMed:11722641).
Function	disease:Defects in CD247 are a cause of primary T-cell immunodeficiency [MIM:610163]. Affected individuals suffer of recurrent infections. Patients T-cell counts are very low and B-cell counts are normal.,domain:The ITAM domains mediate interaction with SHB.,function:Probable role in assembly and expression of the TCR complex as well as signal transduction upon antigen triggering.,online information:CD247 mutation db,PTM:Phosphorylated on Tyr residues after T-cell receptor triggering.,similarity:Belongs to the CD3Z/FCER1G family.,similarity:Contains 3 ITAM domains.,subunit:The TCR/CD3 complex of T-lymphocytes consists of either a TCR alpha/beta or TCR gamma/delta heterodimer coexpressed at the cell surface with the invariant subunits of CD3 labeled gamma, delta, epsilon, zeta, and eta. CD3-zeta forms either homodimers or heterodimers with CD3-eta. Interacts with SLA and SLA2. Interacts w
Background	The protein encoded by this gene is T-cell receptor zeta, which together with T-cell receptor alpha/beta and gamma/delta heterodimers, and with CD3-gamma,



-delta and -epsilon, forms the T-cell receptor-CD3 complex. The zeta chain plays an important role in coupling antigen recognition to several intracellular signal-transduction pathways. Low expression of the antigen results in impaired immune response. Two alternatively spliced transcript variants encoding distinct isoforms have been found for this gene. [provided by RefSeq, Jul 2008],

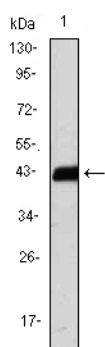
matters needing attention

Avoid repeated freezing and thawing!

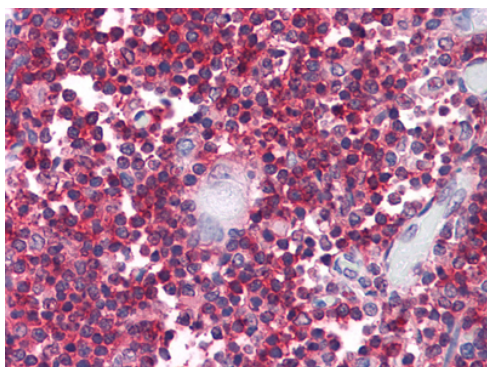
Usage suggestions

This product can be used in immunological reaction related experiments. For more information, please consult technical personnel.

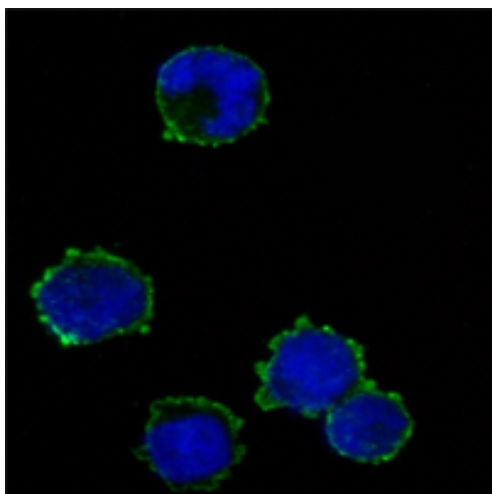
Products Images



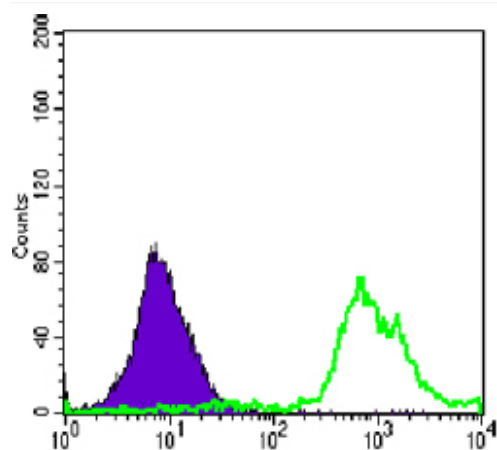
Western Blot analysis using CD247 Monoclonal Antibody against CD247-hlgGfC transfected HEK293 cell lysate.



Immunohistochemistry analysis of paraffin-embedded human Thymus tissues with AEC staining using CD247 Monoclonal Antibody.



Immunofluorescence analysis of K562 cells using CD247 Monoclonal Antibody (green). Blue: DRAQ5 fluorescent DNA dye.



Flow cytometric analysis of Jurkat cells using CD247 Monoclonal Antibody (green) and negative control (purple).